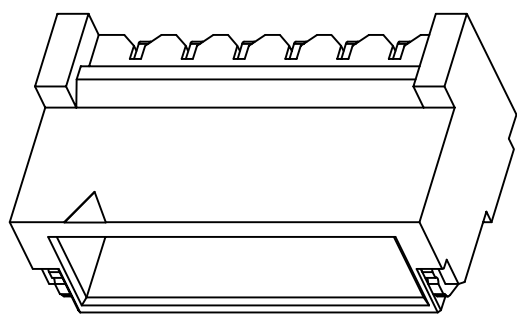
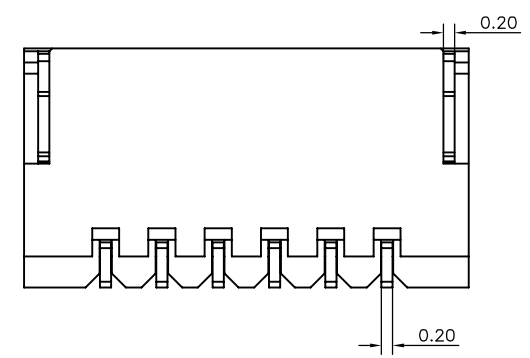
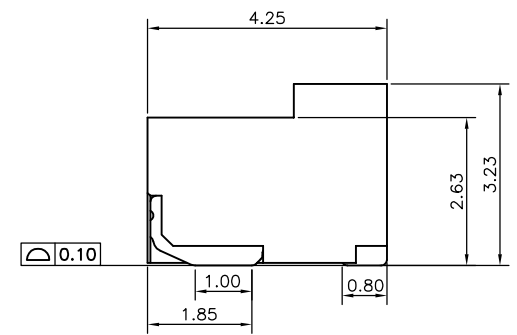
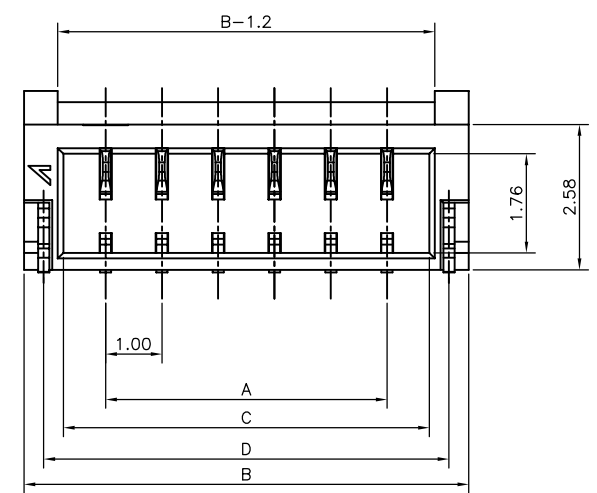


RECOMMENDED PCB LAYOUT



NOTES:

1. MATERIAL:
 - 1.1 HOUSING: THERMOPLASTIC, HIGH TEMP., UL94V-0; COLOR:NATURAL.
 - 1.2 CONTACT: COPPER ALLOY
 - 1.3 FITTING NAIL: COPPER ALLOY
2. FINISH:
 - 2.1 CONTACT: 50~100u" NICKEL UNDERPLATING OVERALL. N:90~120u" MATT TIN PLATING ON SOLDER TAILS, D: 30U MIN ON CONTACT AREA
 - 2.2 FITTING NAIL: 50~100u" NICKEL UNDERPLATING OVERALL. N:90~120u" MATT TIN PLATING ON SOLDER TAILS,
3. REFLOW SOLDER CAPABLE TO 260°C PER ACES SPEC.
4. SPEC. PLS. REFER TO PS-50429-xxxxx-xxx
5. PACKAGE PLS. REFER TO 50437-XXXX-TRP
6. PART NUMBER

P/N LEGEND

50437-XXX X X-XXX

XXX	COLOR	LOGO
001	NATURAL	ACES

NO OF CKT
 PACKING
 0:TAPE & REEL
 1:TUBE

PLATING
 N:MATT TIN(LEAD FREE)
 D:30u" GOLD PLANTING

CKT	A	B	C	D
006	5.00	7.90	6.50	7.20

QUALITY SYMBOLS MAJOR Ⓞ CRITICAL ⓧ GENERAL TOLERANCES (UNLESS SPECIFIED) X ±0.5 XX ±0.25 XXX ±0.1 ANGLES ±2°	DRAWN BY YanJinXiu	DATE 21/02/24	
	CHECKED BY BRAVE	DATE 21/02/24	
	APPROVED BY BRAVE	DATE 21/02/24	DWG NO. 50437-XXXXX-XXX
	UNITS mm		SIZE A4
	SCALE 8:1	SHEET NO. 1 OF 1	REV B
			PART NO. SEE NOTES